

Educational Tours

HISTORIC 
ST. MARY'S CITY



301-994-4371 / 4372 hsmcc.groups@maryland.gov

HISTORIC ST. MARY'S CITY

Historic St. Mary's City is a National Historic Landmark, a uniquely well-preserved archaeological record of more than 10,000 years of human occupation – including archaeological artifacts left by native peoples and European colonists. Today, the site is home to a living history museum that engages both students and the general public in educational programs through novel and exciting ways, encouraging people of all ages to connect the past with their contemporary lives.

Contact Public Programs

301-994-4371 / 4372

hsmcc.groups@maryland.gov

TABLE OF CONTENTS

SECTION 1

A basic introduction to our tours and accessibility of the museum.

SECTION 2

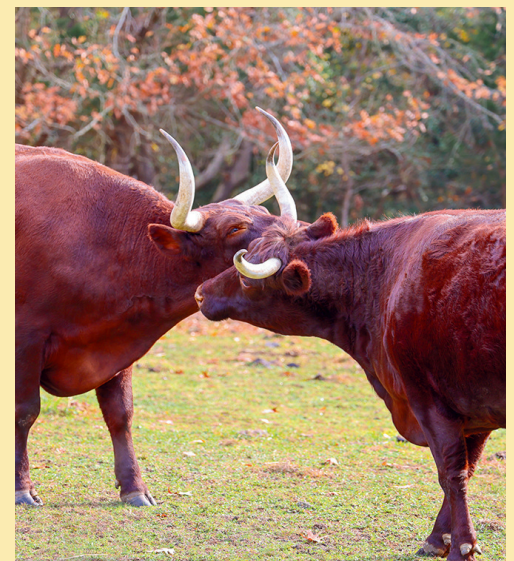
How to make a reservation.

SECTION 3

Payment information and tour rates

SECTION 4

Tour and outreach offerings



YOUR VISIT



A standard walking tour typically takes between two and four hours and can include visits to the Visitor Center, outdoor living history exhibits, The Shop at Farthing's Ordinary, St. John's Site Museum, The Struggle for Freedom exhibit,

Tours can be tailored to meet your group's needs.

Group rates are also available for special events.

ACCESSIBILITY

Historic St. Mary's City is committed to complying with the provisions of the Americans with Disabilities Act (ADA) regarding access for all. If there is anyone in your group who may need special assistance, please contact 301-994-4371/4372 or email hsmcc.groups@maryland.gov.

Information regarding exhibit area accessibility can be found on the Historic St. Mary's City website, www.HSMCdigsHistory.org.



MAKING A RESERVATION

Tours are scheduled on a first-come, first-served basis, it is recommended that tours be scheduled at least four weeks in advance.

An online reservation request form allows you to choose 3 possible dates.

Once the reservation request has been made, you will receive an email confirming the details of your tour.



CANCELLATIONS OR CHANGES

To cancel or make changes to your reservation, call 301-994-4371/4372.

In the event a refund is needed, Historic St. Mary's City will only issue refunds of \$20 or more.



PAYMENT



You will need to make the full payment on your tour date unless you have made prior arrangements.

Please purchase admission for your entire group with one payment.

Cash, check, and credit card (Discover, MasterCard, or Visa) are all acceptable payment methods.

Checks should be made payable to *Historic St. Mary's City*.

An accurate count of participants is required upon check-in.

EDUCATIONAL TOUR RATES

Guided Youth Tour \$7 per youth/\$10 per adult

- For every 10 youth, 1 adult receives free admission.
 - This is for tours geared solely towards a youth audience.

Guided Family Tour \$13 per adult / \$ 7 per youth



PUSS IN BOOTS

AGES 3 - 5

ONE HOUR

Discover the power of playful learning!

The immersive storytelling tour takes classes on a journey with Puss the mischievous cat as he helps his master find love.

Using historical objects and introducing vocabulary, children will be delighted as they weave through the plantation on this fanciful tale. Based on the classic fairy tale by French author Charles Perrault at the end of the seventeenth century, our version weaves through the plantation for this fanciful tale.



STANDARDS OF LEARNING

PRE - K

Social Studies

1A1 a-b, 5A1a

Speaking/ Listening

SL.PK1a-b, SL.PK.2

Language

L.PK.4,
L.PK.5a-c,
L.PK.6

Physical Education

S1.PK.1
S4.PK.1a

KINDERGARTEN

Social Studies

1A1a-b, 2A1a,
3C1a-c,
5A1a-b, 5A2a

Speaking/ Listening

SL.K.1a-b, SL.K.2,
SL.K.6

Language

L.K.4a-b,
L.K.5a-d,
L.K.6

Physical Education

S1.K.1
S4.GK.1a



COMING TO AMERICA

GRADES K - 2

TWO HOURS

Pack your bags and travel back in time as an early colonist. Using hands-on activities, students will learn of the journey and arrival of those who came to Maryland in search of a better life.

Play colonial games, understand the importance of simple machinery to help sailors do their jobs, and much more!

STANDARDS OF LEARNING

KINDERGARTEN

Social Studies

1A1a-b, 1C1a, 2A1b,
3A1a-c, 3B1a, 3D1a-b,
4A1a-b, 4A2a-c, 4A3a,
5A1a-b, 5A2a-c

Speaking/ Listening

SL.K.1a-b, SL.K.3,
SL.K.4

Language

L.K.5.c, L.K.6

GRADE 1

Social Studies

2A1a-b, 2Ba, 2C1a,
3A1a, 3A1e, 2A1a-b,
2Ba, 2C1a, 3A1a, 3A1e,

Language

L.K.4a-b, L.K.5a-d,
L.K.6

GRADE 2

Social Studies

1A1a-b, 2A1a, 3C1a-c,
5A1a-b, 5A2a

Language

L.2.5.a



MARYLAND HISTORY HIGHLIGHTS

GRADES 3 - 4

FOUR HOURS

Examine the economy, religion, and culture of early Maryland life with engaging activities.

The tour will visit all four main exhibit areas including the waterfront and Maryland Dove, the town center area, Woodland Indian Hamlet, and plantation.



STANDARDS OF LEARNING

GRADE 3

Social Studies

2A1a, 2B1a, 2C1a, 3A1b,
3B1a-d, 3C1a-b, 3D1a-c,
4A1a-c, 4A2a-d, 5A2a-b

Speaking/ Listening

SL.3.1a-d

Language

L.3.6

GRADE 4

Social Studies

1A1a, 1A2a, 1B1a,
2A1a-d, 2B1a-b,

Speaking/ Listening

L.K.4a-b, L.K.5a-d,
L.K.6

Language

L.4.6

EXPLORING THE PAST

HIGH SCHOOL

TWO HOUR

Students will learn of Maryland's history throughout the 1600s, comparing and contrasting different groups of people living in Maryland at the time of and after the point of contact, religious and political history at Maryland's first capital, the tobacco economy, distinctions between indentured servants and enslaved peoples, and the development of the institution of slavery throughout this period.

STANDARDS OF LEARNING

AP United State History Course Framework

NAT-1.0

POL-1.0

WXT-1.0, WXT-2.0, WXT-3.0

CUL-1.0, CUL-2.0, CUL-3.0

MIG-1.0

GEO-1.0

WOR-1.0

Historical Period 2 (1607-1754)

Key Concepts 2.1.I.C., 2.1.II.A&D, 2.1.III.A&B, 2.2.I.A, 2.2II.A&b



OUTREACH

MOTHER GOOSE RHYME TIME

ONE HOUR

PRESCHOOL - KINDERGARTEN

Favorite nursery rhymes come to life during this interactive and memorable adventure

Available: September - March



STANDARDS OF LEARNING

PRE - K

Social Studies

1A1a-b, 5A1a

Speaking / Listening

SL.PK.1a-b

Language

L.PK.4,
L.PK.5a-c,
L.PK.6

Physical Education

S1.PK.1
S4.PK.1a

KINDERGARTEN

Social Studies

1A1a-b
5A1a-b
5A2a-b

Speaking / Listening

SL.K.1a-b

Language,

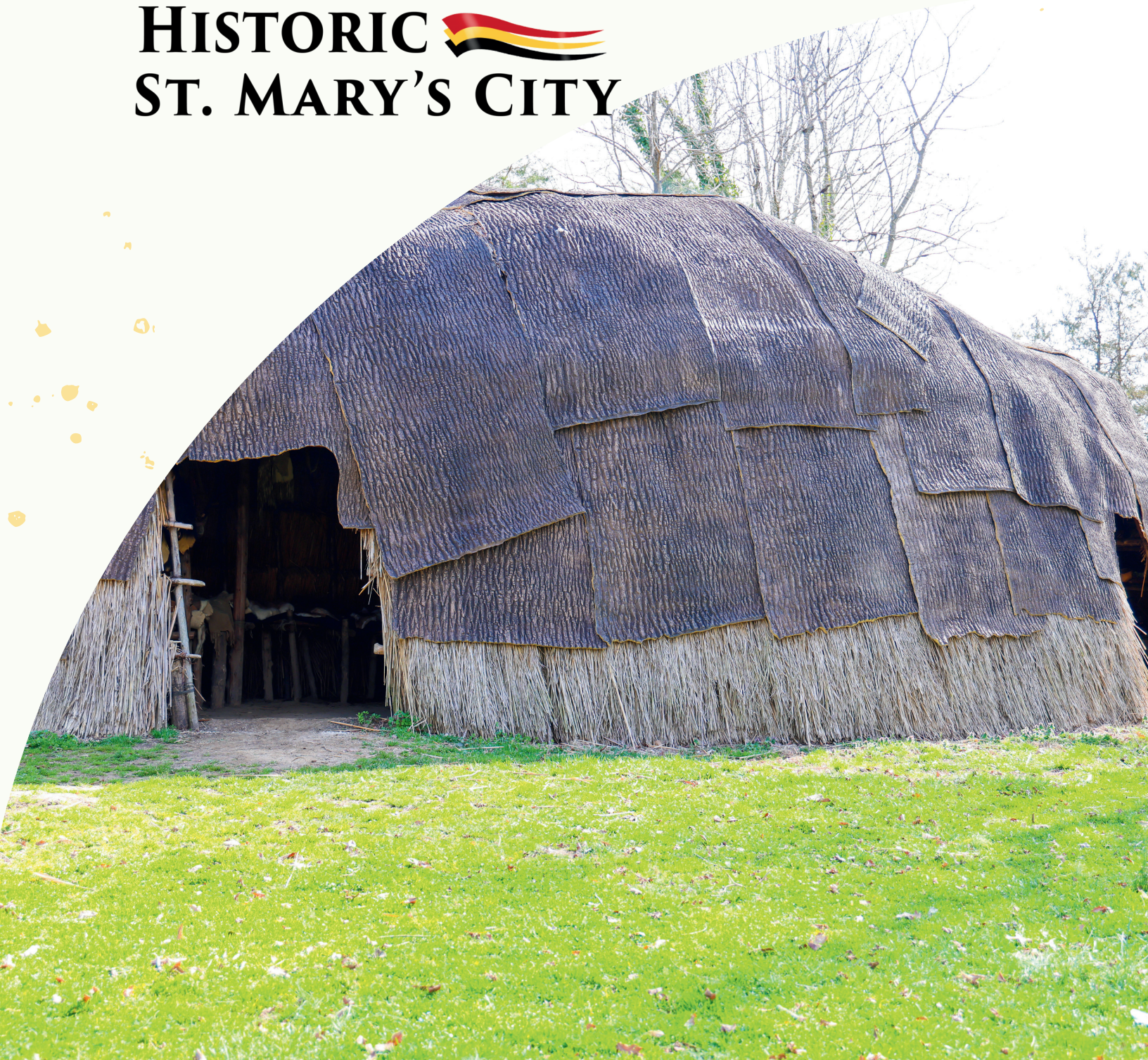
L.K.4a-b
L.K.5a-d
L.K.6

Physical Education

S1.K.1
S4.GK.1a

Educational Tours

HISTORIC 
ST. MARY'S CITY



301-994-4371 / 4372 hsmcc.groups@maryland.gov